

THINK FASTER






► GO TO WYNN HOSPITAL IMMEDIATELY!

STROKE

WITH STROKE EVERY SECOND MATTERS.



KNOW THE SIGNS OF A STROKE. A stroke is a medical emergency and symptoms come on suddenly.

- F**  **FACE**
Uneven smile. One side of the face droops or is numb.
- A**  **ARMS**
One arm drifts down when raising both or is weaker and more numb than the other.
- S**  **STABILITY**
Dizziness. Hard time keeping balance. Trouble walking. Loss of coordination.
- T**  **TALKING**
Slurred words. Unable to speak. Hard time being understood or understanding speech.
- E**  **EYES**
Difficulty seeing out of one or both eyes. Double vision.
- R**  **REACT**
Call 911 immediately! Call even if symptoms go away. Remember when symptoms first began.

AS SOON AS YOU NOTICE THESE SIGNS AND SYMPTOMS, NOTE THE TIME!



Treatments are time sensitive. The best outcomes happen when you arrive within two hours of the start of the symptoms.

Treatment options include medicine to break up the clot (medical management) or a catheter to remove the clot (endovascular treatment).

DON'T DRIVE. CALL 911! Get to Wynn Hospital as soon as possible. **Every second matters!**

ON AVERAGE, SOMEONE DIES OF CARDIOVASCULAR DISEASE



ON AVERAGE, SOMEONE IN THE U.S. HAS A STROKE EVERY



ON AVERAGE, SOMEONE DIES OF A STROKE EVERY





THE COMPREHENSIVE STROKE CENTER

Wynn Hospital

111 Hospital Drive, Utica, NY 13502

315-917-9966

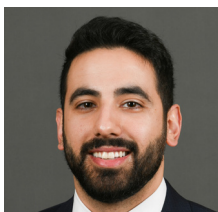
Stroke and Neuro-Endovascular Team



Scott S. Brehaut, MD
Neurocritical Care Director



Yahia M. Lodi, MD
Neuroendovascular Surgery
Director of Cerebrovascular Disease



Ossama Khazaal, MD
Neurocritical Care Provider



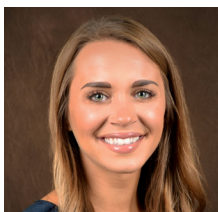
Varun V. Reddy, MBBS
Stroke and Neuroendovascular Surgery
Service Line Director



Melissa Kelly, RN, BSN
Stroke Program Clinical Coordinator



Georgia Deveans-Smith, RN
Stroke Nurse Navigator



Gina Educate, FNP-C
Nurse Practitioner



Shari Bolton, RN
Stroke Data Abstractor



Gabrielle Nellenback, FNP-BC
Nurse Practitioner



MVHS

Comprehensive Stroke
and Neuro-Endovascular
Program

MVHEALTHSYSTEM.ORG/STROKE